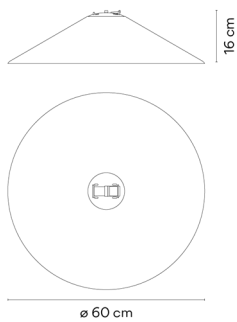







## 6240

Design von Diez Office

### Modellblatt



| Farbe   |                                 |
|---|---------------------------------|
|  | 42 Blue M1<br>NCS S 5010-B10G   |
|  | 13 Off-White<br>NCS S 1000-N    |
|  | 53 Green M1<br>NCS S 6005-G80Y  |
|  | 37 Terra Red<br>NCS S 4040-Y70R |
|  | 11 Black<br>NCS S 8500N         |
|  | 24 Beige M1<br>NCS S 2005-Y50R  |

**LED-Temperaturfarbe** 2700 K / 3000 K / 3500 K

**Dimmen** On/Off / CASAMBI / PUSH  
1-10V DALI CASAMBI

**Installationstyp** Superficie / Empotrado / Driver Remoto

**Materialien**  
**Lichtquelle** 1 x LED 16,7W 900mA

**LED** CRI>90 1606 lm 100.38  
2700 K / 3000 K / 3500 K



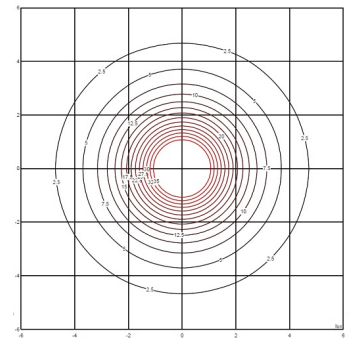
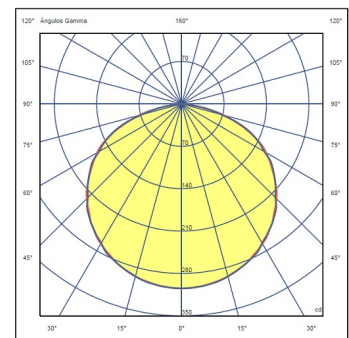
**Anwendung** Lighting Toolkit

**Verpackung** 1 Kartons  
0.727 m x 0.727 m x 0.32 m  
Bruttogewicht 6.5  
Nettogewicht 2.5  
Vol. 0.1691

### Lichteffekt



### Photometrische Daten



**Effizienz** 55.49 lm/W  
**Koordinatensystem** CG  
**Gesamtfluss** 953.44 lm  
**Höchster Wert** 304.48 cd

Alle unsere Produkte haben eine fünfjährige Garantie. Lesen Sie unsere rechtlichen Bedingungen unter [www.vibia.com/warranty](http://www.vibia.com/warranty)

Vibia Lighting, S.L.U.

Office / Oficina  
Progrés 4-6. 08850 Gavà. Barcelona, Spain.

International T +34 934 796 971  
Spain / Portugal T +34 934 796 970

customer.service@vibia.com  
vibia.com